

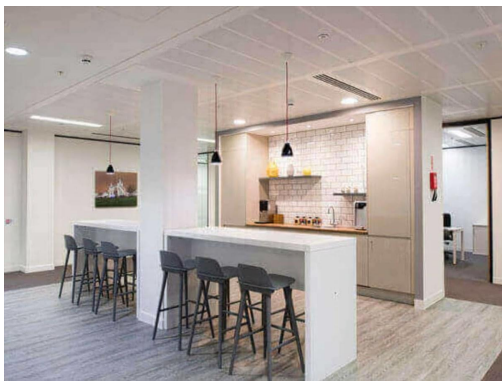
Serviced Office Space UK

Craigshaw Road

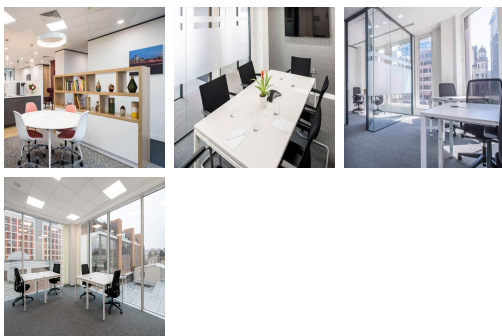
Aberdeen AB12 3QH



This workspace offers clients a range of convenience and potential for leisure activities. It is an ideal hub for all forms of public transport, including major bus routes, train stations and airports. There is excellent connectivity of public as well as a private transport system and reaching the centre is therefore pretty easy and comfortable without much hassle. Aberdeen Airport, which caters to international visitors, lies only 7 miles from the workspace. Wherever clients come from, it is easy to get to this centre for work or leisure.



This centre offers 24-hour access to high-end private offices, coworking spaces and break-out areas tailored for ultimate efficiency. All members can take advantage of the lightning-fast internet, printing and scanning services and well-equipped kitchen, providing a premier business experience. The inviting interiors have been professionally designed to create a modern ambience that will bolster any company's professional image. Offering 24-hour access, an inspiring environment and all the amenities necessary for businesses to advance success. This office space is perfect to achieve the maximum productive effectiveness possible.



transport links

Underground	N/A
Train Station	Aberdeen
Road Link	N/A
Airport	Ardenlea House Hotel

Virtual Office

- **Price** : Â£75 pcm
- **Min Price** : Â£75 pcm
- **Min Term** : 24 mnths
- **Max Term** : 999 mnths