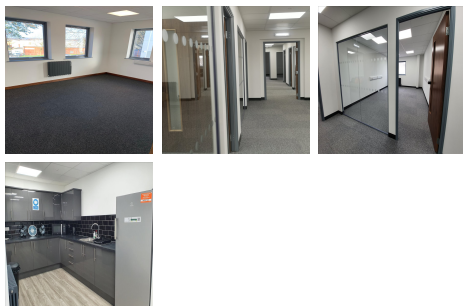


# Serviced Office Space UK

## Stoke Bardolph

### Nottingham NG14 5JX



Conveniently situated on the new Teal Park development between Netherfield and Stoke Bardolph, this brand-new self-storage and the Flexi-office centre offers access to an array of facilities, perfect for business owners seeking to optimize their productivity. The location is easily accessible, only a 10-minute drive from the city centre with close proximity to the Colwick Loop Road, linking to the M1 to the west and the A1 to the northeast. In addition, members can take advantage of nearby subway links, restaurants, and shopping centres, including the adjacent Victoria Retail Park and new trade and retail elements of Teal Park, currently in development. The state-of-the-art facility promises to address all the storage needs, while the flexible-office solutions provide an ideal environment for business operations.

The office space offers excellent flexible office space for small companies, individuals, or growing businesses. Each of the office suites is equipped with broadband infrastructure, ready for the clients to get set up with any telecom provider. The office space is secure and supervised during opening hours with round-the-clock CCTV and alarm monitoring services. Each of the office suites is complete with low glare lighting, heating and air conditioning or windows, and access to a kitchen and conference facilities so members can work comfortably and impress the visitors. The workspace is a great choice for IT consultancies, marketing businesses, call centres, or companies that require a great location and generous opening hours.

### transport links

<b>Underground</b>	N/A
<b>Train Station</b>	Carlton
<b>Road Link</b>	M1 Junction 24 / 25
<b>Airport</b>	Nottingham Air Field

### Serviced Offices

- **Price** : Â£123 pcm
- **Min Price** : Â£123 pcm
- **Min Size** : 2 wkstns
- **Max Size** : 4 wkstns
- **Total Size** : 63 wkstns
- **Min Term** : 6 mnths
- **Max Term** : 12 mnths