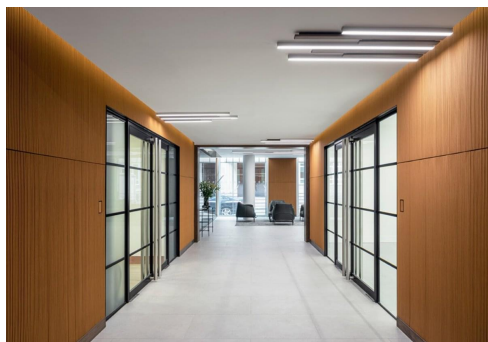


Serviced Office Space UK

2 Park Street

London W1K 2XA



This fantastic workspace is located between Grosvenor Square, South Audley Street and Hyde Park. It occupies a corner location at the southern end at its intersection with South Street in the heart of the city and is surrounded by some of the best dining, shopping, and entertainment options. Proximity to the nearest train stations, bus stops, and the city's best spots make this splendid centre the best place to collaborate, innovate and brainstorm. Along with that, buses, taxis, and other transportation services are always readily available making it easier for members to commute.

The workspace offers a great and modern working office space with all the required facilities for seamless working, such as front desk reception, 24-hour access, fast internet access, an on-site management team, a fully air-conditioned workspace, and car parking available to all users. This business centre is equipped with the latest technical technology, state-of-the-art meeting and conferencing facilities, and excellent business services supported by a team of professionals. Elegant lighting, modern furniture, flooring, and services like kitchen, CCTV facility, changing rooms, mail handling service, lift, locker and shower facility are in-house, so members can work to their fullest potential.

transport links

Underground	Hyde Park Corner
Train Station	Victoria Station
Road Link	N/A
Airport	London City Airport

Serviced Offices

- **Price** : £990 pcm
- **Min Price** : £990 pcm
- **Min Size** : 40 wkstns
- **Max Size** : 273 wkstns
- **Total Size** : 273 wkstns
- **Min Term** : 12 mnths
- **Max Term** : 24 mnths