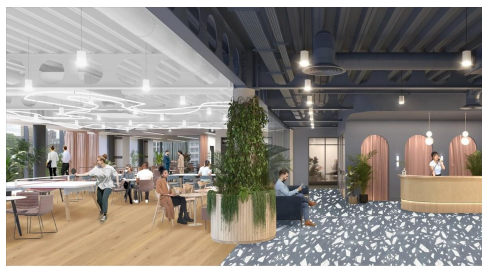


# Serviced Office Space UK

## 100 Embankment

### Manchester M3 7FA



This workspace is located in the prime location of Manchester. Built on the site of Manchester's historic Exchange Station within the city, this office space is the ideal address for dynamic businesses. With Selfridges and the many bars and restaurants within the Corn Exchange on the doorstep, employees will sure to want to come back to the office. The embankment is extremely well-connected. Served by all forms of public transport, it's just a four-minute walk from Victoria Station, which has recently been transformed into a major regional transport hub.

This workspace is strikingly designed and surrounded by green spaces. This centre is the perfect base from which to build the future. Wherever the members are on the business journey, this workspace's sleek design perfectly sets the tone for their ambitions. Especially the stunning roof terrace overlooking the cathedral. Enjoying a prime city centre location, from hot desks to full enterprise suites, this is a home for innovators of all sizes who want to embrace being a better business. An impressive space for businesses to connect, collaborate and grow. This workspace offers three floors of contemporary office space within this impressive building, consisting of breakout space, private offices and enterprise suites, bookable meeting rooms, mission rooms, phone booths, and amenities.

### transport links

Underground	N/A
Train Station	Manchester Oxford Road
Road Link	Manchester Victoria Station
Airport	!

### Serviced Offices

- **Price** : Â£410 pcm
- **Min Price** : Â£410 pcm
- **Min Size** : 1 wkstns
- **Max Size** : 110 wkstns
- **Total Size** : 111 wkstns
- **Min Term** : 12 mnths
- **Max Term** : 48 mnths