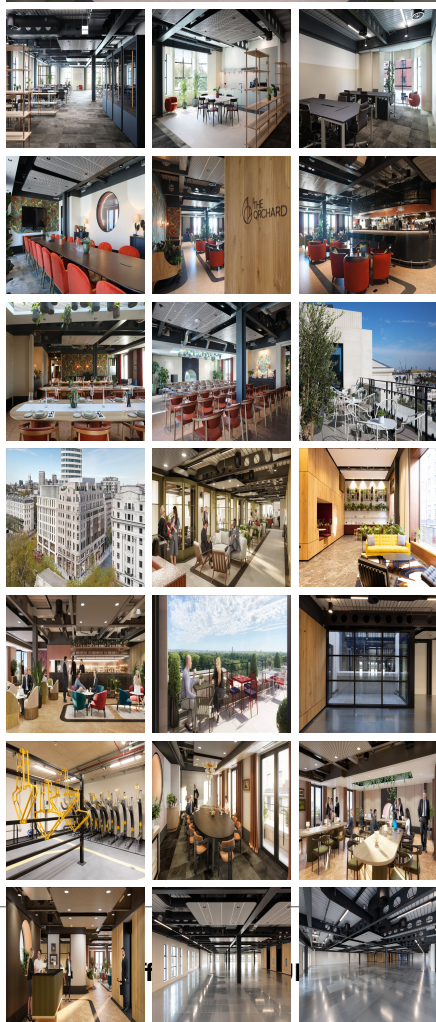
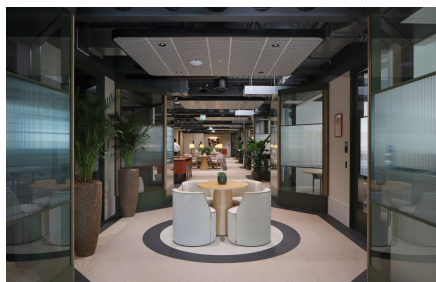


# Serviced Office Space UK

## 1-4 Marble Arch

London W1H 7AL



This business centre in the heart of London offers much more than just a workspace. With several amenities nearby, it becomes the ideal location for any modern business. Proximity to the nearest train stations, bus stops and the city's best spots make this splendid centre the best place to collaborate, innovate and brainstorm. Furthermore, receiving clients is easy as the nearest airport to the office space is at a distance of 13 miles. Moreover, hosting clients is not a hassle as various hotels are near the office space. This business centre in the heart of London offers much more than just a workspace. With several amenities nearby, it becomes the ideal location for any modern business. Proximity to the nearest train stations, bus stops and the city's best spots make this splendid centre the best place to collaborate, innovate and brainstorm. Furthermore, receiving clients is easy as the nearest airport to the office space is at a distance of 13 miles. Moreover, hosting clients is not a hassle as various hotels are near the office space.

This remarkable centre provides private offices expertly designed to maximize productivity. The spacious conference rooms are perfect for high-quality team-building experiences, ensuring an environment that promotes innovation and success. In addition, the centre offers a range of modern amenities such as network facilities, photocopy and scanning machines, phone booths, showers, and 24-hour access. The rooftop terrace, breakout space, event space, and bike storage facilities also add to the centre's appeal, creating an ideal environment for businesses of all types to reach their full potential.

### transport links

<b>Underground</b>	Marble Arch
<b>Train Station</b>	Victoria Station
<b>Road Link</b>	N/A
<b>Airport</b>	London City Airport

### Serviced Offices

- **Price** : £1110 pcm
- **Min Price** : £1110 pcm
- **Min Size** : 6 wkstns
- **Max Size** : 56 wkstns
- **Total Size** : 255 wkstns
- **Min Term** : 12 mnths
- **Max Term** : 60 mnths