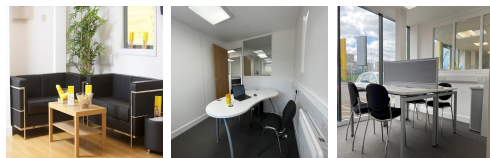


# Serviced Office Space UK

## 2A Bankhead Drive

Edinburgh EH11 4EJ



Located to the West of Edinburgh, the offices boast of a convenient location for clients seeking easy access in and out of the city. With free car parking and a bus stop located just opposite, the property offers excellent transport links into the centre of Edinburgh. Whether arriving by car, rail, tram, or plane, the offices are just a few miles from Edinburgh International Airport and connecting public transport services. City Bypass is only a mile away, connecting clients to the South and East of the city. In addition to the convenient location, several cafes and takeaway food outlets can be found nearby, providing a great selection of food options.

This workspace is a secure self-storage centre with a dedicated office hub. The office suites are located on the ground floor of the building right next to the reception. This centre provides for either two or four workstations and is available either furnished or unfurnished. The offices have free parking and within the office hub area, there are bathroom and kitchen facilities. There is a range of business services including such as confidential shredding, mailbox facilities, free delivery receipts service and organising couriers for clients along with 25 square-feet extra storage space so that clients can store anything there.

### transport links

Underground	N/A
Train Station	Edinburgh Park
Road Link	M8
Airport	Fifeshuttle

### Serviced Offices

- **Price** : £168 pcm
- **Min Price** : £168 pcm
- **Min Size** : 1 wkstns
- **Max Size** : 2 wkstns
- **Total Size** : 5 wkstns
- **Min Term** : 1 mnths
- **Max Term** : 60 mnths