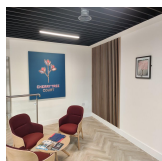
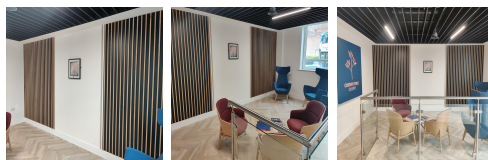
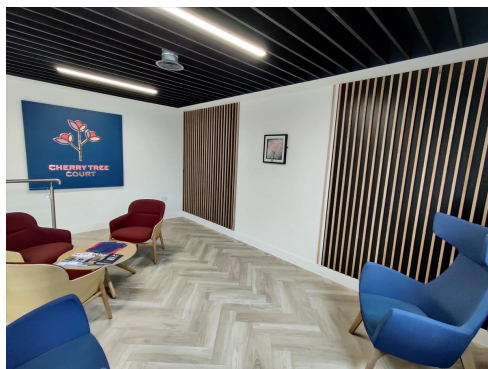


Serviced Office Space UK

36 Ferensway

Hull HU2 8NH



Cherry Tree Court occupies a highly prominent position on the western side of Ferensway, at the intersection with Portland Street, nestled in the vibrant heart of Hull City Centre. Boasting proximity to Hull's primary bus and railway station, the building enjoys adjacency to the bustling St. Stephen's retail and leisure complex. This prime location offers unparalleled convenience, providing easy access to the diverse array of business, shopping, and leisure amenities that define the city centre. With its strategic placement in a bustling commercial hub, Cherry Tree Court offers businesses the opportunity to thrive amidst a dynamic urban landscape, where opportunities for growth and connectivity abound.

Refurbished office space available for lease in Hull city centre. The property provides office space over ground, first, and second floors, featuring a newly renovated reception, WCs, and showers. Cherry Tree Court office space also includes ample car parking. Situated within a five-minute walk from Hull Paragon Interchange, patrons of Cherry Tree Court benefit from nearby amenities and accessible local transport, along with a dedicated team to ensure smooth business operations. Located just a five-minute walk from Watford's central hub, this prominent building boasts a newly refurbished shared reception, common areas, a spacious car park, and on-site storage.

transport links

| | |
|----------------------|------------------------------|
| Underground | N/A |
| Train Station | First Hull Trains |
| Road Link | N/A |
| Airport | Hull Royal Infirmary Helipad |

Leased Spaces

- **Min Size** : 50 sq ft
- **Max Size** : 311 sq ft
- **Total Size** : 22818 sq ft
- **Min Term** : 12 mnths
- **Max Term** : 60 mnths