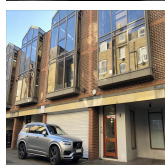
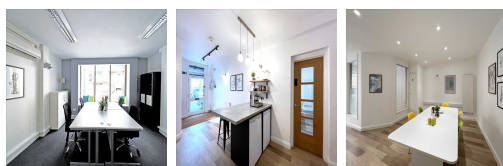
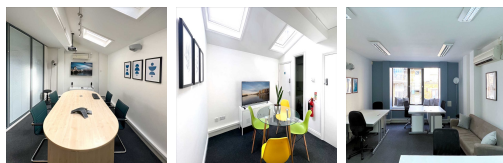


Serviced Office Space UK

7-8 Crescent Stables

London SW15 2TN



This workspace is in the heart of London and offers an ideal environment for business success and productivity. It boasts proximity to the city's shopping district, transport hubs, and cultural attractions, making it an unbeatable choice for networking. The convenience of transport options such as bus stops, trains, and taxi ranks means it is easy to access from any city area. Heathrow Airport is the nearest airport, 10 miles away from the workspace. This centre is conveniently located and boasts excellent transport links as well.

This modern office space is ideal for professionals looking to make the most of their careers. This workspace has exceptional serviced offices, equipped with an extensive range of beautiful furniture and ready to move into. The centre also provides spacious meeting rooms with natural light and fresh air. For a much-needed breather between busy days, the centre offers cosy breakout lounges for clients to take some time away from the desk in an engaging environment. Moreover, a fully equipped kitchen is also available for members to grab various beverages and snacks. This amenity-rich complex is the perfect location for any business seeking a modern workspace to thrive.

transport links

Underground	East Putney
Train Station	Victoria Station
Road Link	Putney High Street
Airport	Heathrow Airport

Coworking Spaces

- **Price** : Â£280 pcm
- **Min Price** : Â£280 pcm
- **Total Size** : 5 wkstns
- **Min Term** : 3 mnths
- **Max Term** : 12 mnths