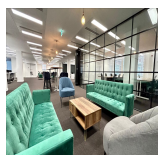
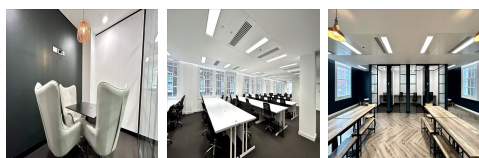
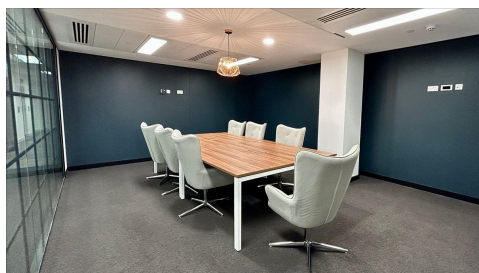


Serviced Office Space UK

64 North Row

London W1K 7DA



Located off the iconic area of Mayfair, parking is convenient and there are plenty of easy transportation options available via buses, trains, and more. Not only that, but Marble Arch station is within walking distance - less than 1 minute away - meaning snappy commutes for clients staying in the local area. The surrounding area houses plenty of cafés to choose from and it is just a stone's throw away from the world-famous Selfridges department store making it one of the most sought-after locations for lunch spot indulgences or fine dining experiences at some of Mayfair's luxury restaurants.

This impressive office space is fully fitted and furnished in a way that can be customized to the particular needs of any business. With a private kitchen, breakout area, an executive boardroom, 3 meeting rooms and 8 phone booths or working pods, every essential feature is catered for. Providing air conditioning, plenty of natural lighting and 3 lifts as well as secure cycle storage, shower facilities and even an onsite gym, no stone has been left unturned. Not only that but all rents, rates and service charges are included in the price so all clients need to worry about is managing the on-site team who will take care of cleaning, maintenance, utilities and IT. 24/7 access provides complete security and peace of mind; this office space truly contains everything anyone could want or need.

transport links

Underground	Marble Arch
Train Station	Victoria Station
Road Link	N/A
Airport	London City Airport

Serviced Offices

- **Price** : £137500 pcm
- **Min Price** : £137500 pcm
- **Min Size** : 220 wkstns
- **Max Size** : 220 wkstns
- **Total Size** : 220 wkstns
- **Min Term** : 12 mnths
- **Max Term** : 1200 mnths